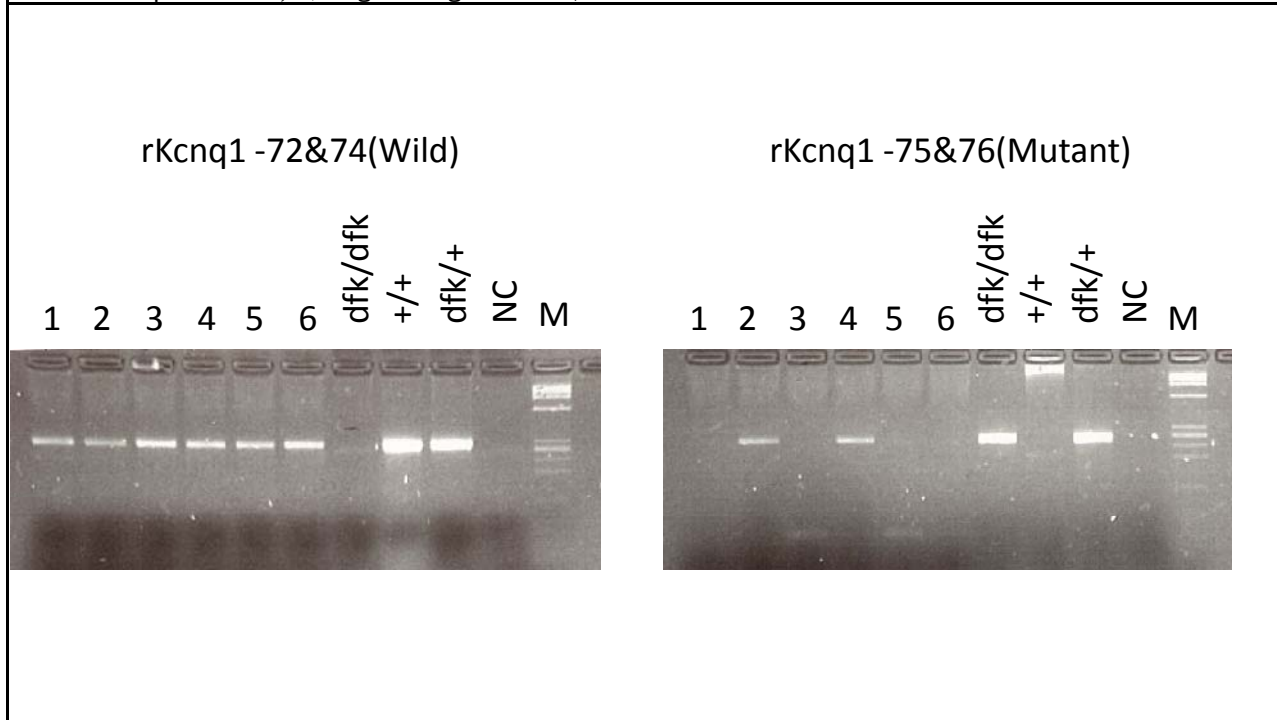


Gene symbol	<i>Kcnq1</i> <sup>dfk</sup>
-------------	-----------------------------

primer	Sequence(5'-3')	Size	target gene	accession
rKcnq1-72 rKcnq1-74	CACACCCTCTGGGAAGACAC GCTGAGGGACCATGAGGATA	259bp	Kcnq1	NM_032073.1
rKcnq1-75 rKcnq1-76	GAGCGGCTTGTCTTCTTCAACTT AAACAACACATATGGTAAACATGC		Kcnq1	
comment				

PCR condition							
Taq polymerase		BIOTAQ™ HS DNA Polymerase (Bioline Reagents Ltd., UK)					
Thermal cycler		PC-808(ASTEC)					
PCR buffer		Ampdirect Plus					
		first denature	denature	anneal	extension	cycle	final extension
PCR	°C	94	94	65	72	35	72
	min	3	0.5	1	0.75		3
comment	PCR method; Blood was applied to FTA®card (GE Healthcare UK Ltd.,UK) and dried. 1.5mm FTA disc was removed from the bloody-stained region on FTA®card. Untreated sample discs were placed directly in 15 μL PCR mixture containig 1 × Ampdirect®Plus, 0.2 μM each primer and 0.4 units of BIOTAQ™ HS DNA Polymerase.						

Electrocataphoresis ;4% agarose gel 300V, 30min



Strain harboring mutation	WTC- <i>Kcnq1</i> <sup>dfk</sup> /Kyo
---------------------------	---------------------------------------