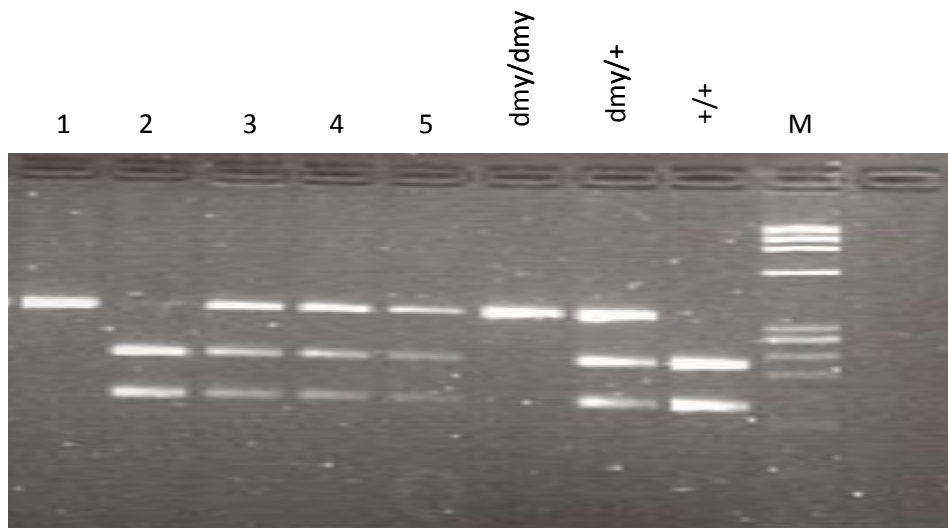


Gene symbol	<i>Mrs2</i> <sup>dmy</sup>
-------------	----------------------------

primer	Sequence(5'-3')	Size	target gene	accession
Mrs2I-31 Mrs2I-32	AAAGTTTGACAAAGAAGGAAACG GGGGATGGAGGGCTATGTAA	349bp	Mrs2I	NM_024001.1
comment				

PCR condition							
Taq polymerase		BIOTAQ <sup>TM</sup> HS DNA Polymerase (Bioline Reagents Ltd., UK)					
Thermal cycler		PC-808(ASTEC)					
PCR buffer		Ampdirect Plus					
		first denature	denature	anneal	extension	cycle	final extension
PCR	°C	94	94	55	72	35	72
	min	3	0.5	1	0.75		3
comment		①PCR method; Blood was applied to FTA®card (GE Healthcare UK Ltd.,UK) and dried. 1.5mm FTA disc was removed from the bloody-stained region on FTA®card. Untreated sample discs were placed directly in 15 μ L PCR mixture containig 1 × Ampdirect®Plus, 0.2 μ M each primer and 0.4 units of BIOTAQ <sup>TM</sup> HS DNA Polymerase. ②RFLP of PCR products; AciI cutting site in the Mrs2 +/- genome.					

Electrocataphoresis ;4% agarose gel 300V, 30min



M: ( $\phi$ X174/Hae III digest)

Strain harboring mutation	DMY/Kyo, WTC.DMY- <i>Mrs2</i> <sup>dmy</sup> /Kyo
---------------------------	---