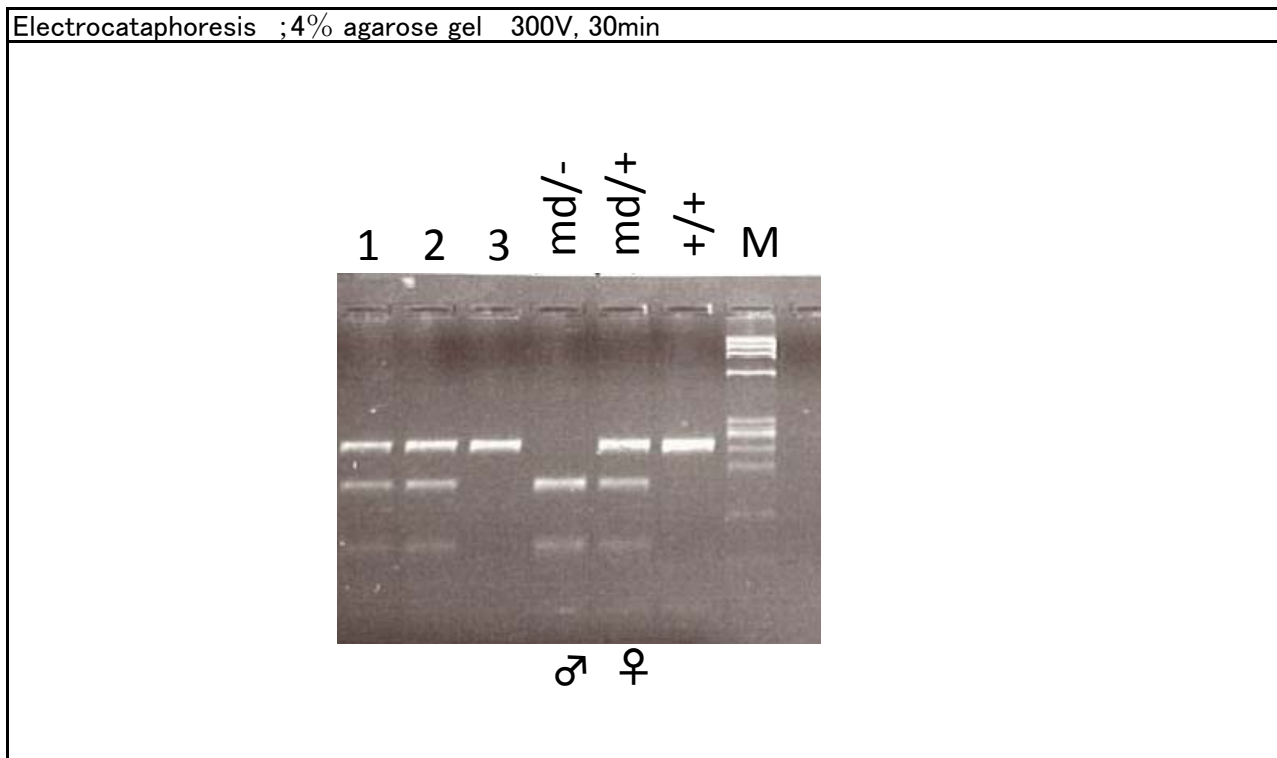


Gene symbol	<i>Pip1^{md}</i>
-------------	--------------------------

primer	Sequence(5'-3')	Size	target gene	accession
rPLP<md>-F	AAGAAAAGGTGGAGGGCAAT	246bp	<i>Pip1</i>	NM_030990.1
rPLP<md>-R	CCAAAGATCCTGCCTGACAGC			
comment	A mutation locates on X chromosome. Mutant males die until 2-3 weeks old. Genotyping should be carried out only for females.			

PCR condition							
Taq polymerase		BIOTAQ™ HS DNA Polymerase (Bioline Reagents Ltd., UK)					
Thermal cycler		PC-808(ASTEC Corporation,Japan)					
PCR buffer		Ampdirect® Plus(Shimadzu Corporation,Japan)					
		first denature	denature	anneal	extension	cycle	final extension
PCR	°C	94	94	55	72	35	72
	min	3	0.5	1	0.75		3
comment		<p>①PCR method; Blood was applied to FTA®card (GE Healthcare UK Ltd.,UK) and dried. 1.5mm FTA disc was removed from the bloody-stained region on FTA®card. Untreated sample discs were placed directly in 15 μ L PCR mixture containig 1 × Ampdirect® Plus, 0.2 μ M each primer and 0.4 units of BIOTAQ™ HS DNA Polymerase.</p> <p>②RFLP of PCR products; <i>Pip1^{md}</i> mutaion make <i>Ava</i>II cutting site in the <i>Pip1^{md}/-</i> genome.</p>					



Strain harboring mutation	MD/Tama
---------------------------	---------